

AIRPORT DIAGRAM

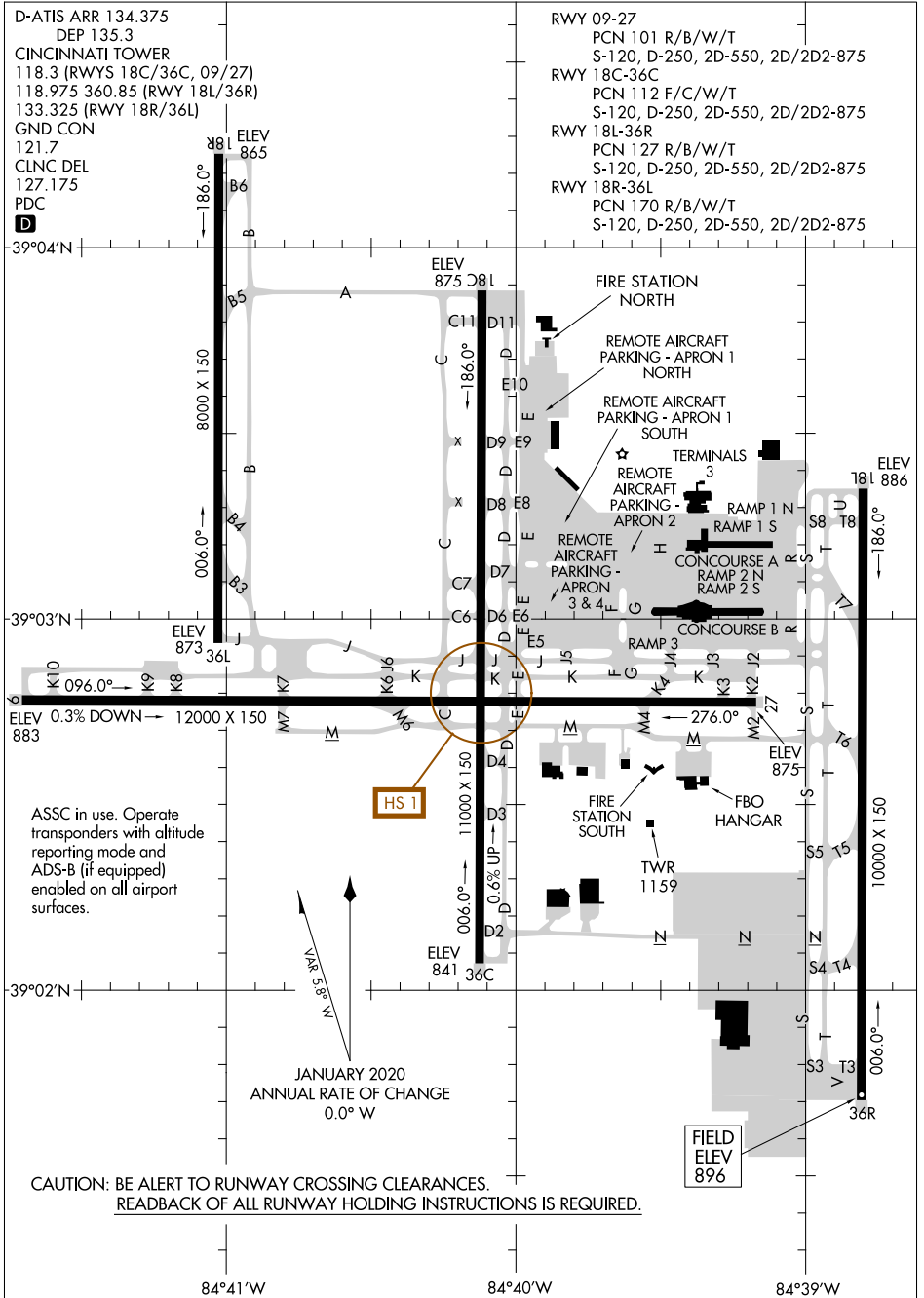
CINCINNATI/NORTHERN KENTUCKY INTL (CVG)
4L-655 (FAA)
COVINGTON, KENTUCKY

D-ATIS ARR 134.375
DEP 135.3
CINCINNATI TOWER
118.3 (RWYS 18C/36C, 09/27)
118.975 360.85 (RWY 18L/36R)
133.325 (RWY 18R/36L)
GND CON
121.7
CLNC DEL
127.175
PDC
D

RWY 09-27
PCN 101 R/B/W/T
S-120, D-250, 2D-550, 2D/2D2-875
RWY 18C-36C
PCN 112 F/C/W/T
S-120, D-250, 2D-550, 2D/2D2-875
RWY 18L-36R
PCN 127 R/B/W/T
S-120, D-250, 2D-550, 2D/2D2-875
RWY 18R-36L
PCN 170 R/B/W/T
S-120, D-250, 2D-550, 2D/2D2-875

SE-1, 20 MAY 2021 to 17 JUN 2021

SE-1, 20 MAY 2021 to 17 JUN 2021



D

HS 1

FIELD
ELEV
896

ASSC in use. Operate transponders with altitude reporting mode and ADS-B (if equipped) enabled on all airport surfaces.

VAR 5.8° W
JANUARY 2020
ANNUAL RATE OF CHANGE
0.0° W

CAUTION: BE ALERT TO RUNWAY CROSSING CLEARANCES.
READBACK OF ALL RUNWAY HOLDING INSTRUCTIONS IS REQUIRED.